

2013

# Wild Desert Calendar

Oregon Natural Desert Association







## Oregon Natural Desert Association: a Voice for Oregon's Wild Desert

Over the course of our 25-year history, an active community of ONDA supporters has protected wild places in Oregon's High Desert and restored fish and wildlife havens such as Hart Mountain and the John Day River. Hard-working volunteers, dedicated donors, and passionate advocates – it's the thousands of voices working together that make up ONDA's story, and our strength.

Enjoy the stunning photographs in this calendar. Visit these special places and experience them firsthand. You can help conserve Oregon's spectacular desert rivers and landscapes today.

Visit [www.onda.org](http://www.onda.org) and click on Get Involved.



TOP ROW: Oregon Desert Trail inventory, Leslie Gulch, © Jeremy Fox.

MIDDLE ROW: South Fork Crooked River planting, © Michael O'Casey; Sage grouse lek count, Hart Mountain, © Jesse Laney; Owyhee River float trip, © Mariah Hands.

BOTTOM ROW: Hampton Butte, © Tyler Roemer; Silvies Ranch aspen planting, © Michael O'Casey.



# Oregon's Wild Desert:

## 8 million acres to explore

The rugged and sage-scented landscapes of Oregon's High Desert sit in stark contrast to the typical notion of Oregon wilderness. Out here, gnarled old juniper trees, sheer canyons, craggy peaks and lonely expanses of sagebrush dominate. Despite the fact that desert landscapes cover half of our state, this incredible area is largely unknown – even to most Oregonians.

The Oregon Natural Desert Association (ONDA) exists to protect, defend and restore wild places in our High Desert. For 25 years, we have worked to bring together people who love Oregon's deserts to advocate for the conservation of special places like Steens Mountain, the Oregon Badlands and the John Day River.

Made up of 4,000 members and supporters, ONDA is the only group working exclusively to conserve Oregon's deserts for future generations. Only one percent of Oregon's desert landscape is permanently protected, but our state has no lack of wild desert lands. With 8 million acres of potential Wilderness in Oregon's High Desert, ONDA and our community of desert lovers have a lot of work ahead of us if we are to secure our heritage and preserve this irreplaceable natural resource.

### Protecting Wild Places

The 2013 Wild Desert Calendar brings you an intimate glimpse into some of the expansive and wild places in Oregon's High Desert. All of the areas featured in this year's calendar are either awaiting permanent Wilderness protection or have been preserved as Wilderness thanks to the work of ONDA and our supporters.

When our favorite places are protected as wilderness, we can take comfort in knowing that we will be able to return

year after year, season after season, to the same landscape. In a world of change and growth, Wilderness is a constant in our lives that remains there for us when we need it.

Wilderness designation is our best tool to preserve the natural character of wild lands. ONDA works with federal agencies, landowners, communities and Oregon's Congressional delegation to create long-lasting protections on desert lands through the use of Wilderness designation. The following is a summary of the regions where we will focus our Wilderness protection efforts in 2013:

**Owyhee Canyonlands:** At over 2 million acres, Oregon's Owyhee Canyonlands region is the largest expanse of undeveloped and unprotected wildlands in the lower 48 states. The spectacular beauty of the Owyhee defies the senses and often prompts wonderment that such a landscape exists in Oregon. ONDA is working with a diverse coalition of partners to develop a Wilderness proposal to permanently protect this iconic landscape.

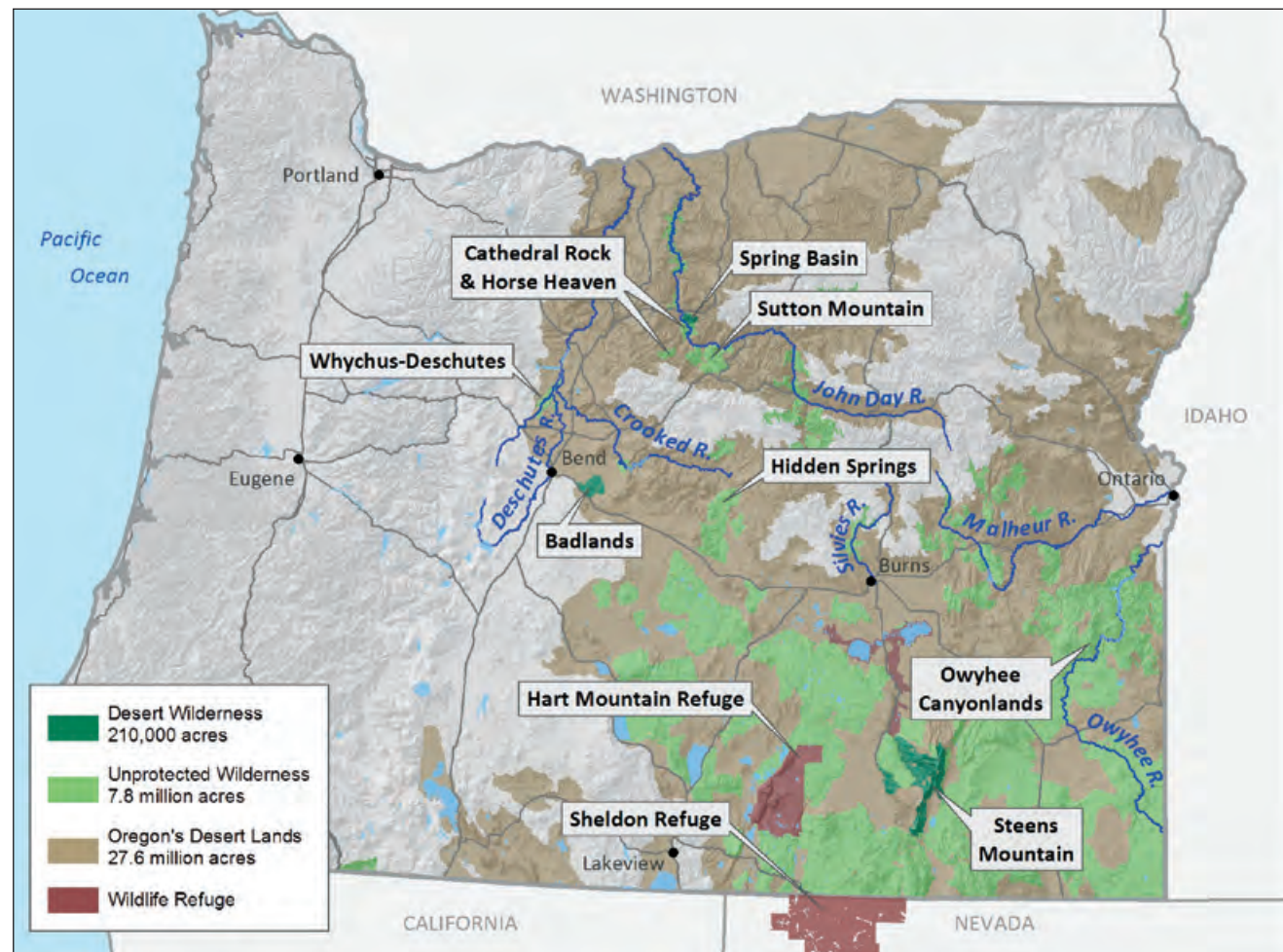
**Central Oregon Backcountry:** This is one of the most fascinating and diverse landscapes found anywhere in the United States. It is known for its world class beauty and recreation opportunities including rafting, hiking, mountain

biking, and climbing. With rolling plains of sagebrush, dramatic river canyons, and dense forests of old growth juniper the "gateway" to Oregon's dry side is a desert wonderland unto itself. Current initiatives include collaborative efforts to protect the Whychus-Deschutes and Hidden Springs areas.

**John Day River:** The John Day River is vital because it flows freely, absent of dams. It hosts some of the best habitat for summer steelhead and one of the few remaining wild spring Chinook salmon runs in the Columbia Basin. ONDA is working closely with county officials, community leaders and local

landowners to protect sensitive public lands in the John Day Basin. Current initiatives include efforts to protect Sutton Mountain, Cathedral Rock and Horse Heaven.

**Greater Hart-Sheldon Landscape:** This remarkable landscape is a high desert oasis with natural lakes, sagebrush flats, and rugged ridgelines, spanning over 3 million acres in southeastern Oregon and northern Nevada. This area encompasses both the Hart Mountain National Antelope Refuge and Sheldon Wildlife Refuge, and is home to hundreds of fish and wildlife species, including pronghorn antelope and sage grouse.



**Take Action for  
Oregon's High Desert.**  
Lend your voice to the  
chorus in support of  
desert Wilderness.



[www.onda.org/get-involved](http://www.onda.org/get-involved)







# JANUARY



Steens Eastside. © Jim Davis

*... in the desert, by the comparative sparsity of the flora and fauna: life not crowded upon life as in other places but scattered abroad in spareness and simplicity, with a generous gift of space for each herb and bush and tree, each stem of grass, so that the living organism stands out bold and brave and vivid.*

Edward Abbey, *Desert Solitaire*



Discover the Alvord, a mysterious playa.

SUNDAY	MONDAY	TUESDAY	WEDNESDAY	THURSDAY	FRIDAY	SATURDAY
		1  New Year's Day Perihelion (Earth closest to Sun) 9 PM PST	2	3  Quadrantid meteor shower (40/hour)	4 ☾	5  ONDA incorporated, 1989
6	7	8	9	10 ●	11  Aldo Leopold born, 1887	12
13	14	15	16	17 ☾	18	19
20	21  Martin Luther King Jr.'s birthday observed	22	23	24	25 ○	26
27	28	29  Edward Abbey born, 1927	30	31  Cows removed from Blitzen Wild & Scenic River, 1997		







# FEBRUARY



John Day River Basin. © Jim Davis

*To those devoid of imagination, a blank place on the map is a useless waste; to others, the most valuable part.*

Aldo Leopold, *A Sand County Almanac*, 1949

SUNDAY	MONDAY	TUESDAY	WEDNESDAY	THURSDAY	FRIDAY	SATURDAY
					1	2
☾ 3	4	5	6	7	8	☉ 9
10	11	12	13	14	15	16
			Ash Wednesday	St. Valentine's Day		
☾ 17	18	19	20	21	22	23
	Presidents' Day					
24	☉ 25	26	27	28		
	Howard Zahniser, father of 1964 Wilderness Act, born, 1906			First Gray Wolf in 37 years enters Oregon, 1999		



Explore the vistas of Sutton Mountain.







# MARCH



Slot canyon, Leslie Gulch. © David Cobb

*Rocks are records of events that took place  
at the time they formed. They are books.  
They have a different vocabulary, a different  
alphabet, but you learn how to read them.*

John McPhee



Adventure awaits in the twists and turns  
of the Owyhee Canyonlands.

SUNDAY	MONDAY	TUESDAY	WEDNESDAY	THURSDAY	FRIDAY	SATURDAY
					1	2
3	4	5	6	7	8	9
10	11	12	13	14	15	16
Daylight Saving Time begins, 2 AM						
17	18	19	20	21	22	23
St. Patrick's Day			Equinox, 4:02 AM PDT		John McConnell, Earth Day founder, born, 1905	Nine Pacific Northwest salmon species listed as endangered, 1999
24/31	25	26	27	28	29	30
Palm Sunday (24) Easter (31)	Passover begins, sunset				Good Friday	Oregon Badlands and Spring Basin Wilderness Areas designated, 2009







# APRIL



Green-tailed Towhee. © Chris Christie

*The desert is where I was born,  
So I shall never be torn  
About where I want to be,  
Because the desert is part of me.  
I was born and raised on desert land.  
I would rather not walk on beach sand.  
If I sound crazy to thee,  
Then crazy I shall be,  
Because the desert is part of me.*

Briana Tovar, 5th grade, first place Earth Day Poetry Contest

SUNDAY	MONDAY	TUESDAY	WEDNESDAY	THURSDAY	FRIDAY	SATURDAY
	1	2	3	4	5	6
		Passover ends				
7	8	9	10	11	12	13
14	15	16	17	18	19	20
21	22	23	24	25	26	27
John Muir born, 1838 Lyrid meteor shower (20/hour)	Earth Day First Earth Day, 1970					
28	29	30				



Volunteer with ONDA!







# MAY



Mariposa Lily. © Al St. John

*People need wild places. Whether or not we think we do, we do... We need to experience a landscape that is timeless, whose agenda moves at the pace of speciation and glaciers... It reminds us why, in those cases in which our plans might influence many future generations, we ought to choose carefully.*

Barbara Kingsolver, *Small Wonder*

SUNDAY	MONDAY	TUESDAY	WEDNESDAY	THURSDAY	FRIDAY	SATURDAY
			1	2	3	4
5	6	7	8	9	10	11
Cinco de Mayo Eta Aquarid meteor shower (10/hour)						
12	13	14	15	16	17	18
Mother's Day						
19	20	21	22	23	24	25
26	27	28	29	30	31	
	Memorial Day					



Working to protect, defend and restore Oregon's  
High Desert for over 25 years.







# JUNE



Northern Pacific Rattlesnake. © Al St. John

*Something hidden. Go and find it.  
Go and look behind the Ranges –  
Something lost behind the Ranges.  
Lost and waiting for you. Go!*

Rudyard Kipling, *The Explorer*

SUNDAY

MONDAY

TUESDAY

WEDNESDAY

THURSDAY

FRIDAY

SATURDAY

						1
2	3	4	5	6	7 •	8
9	10	11	12	13	14	15
					Lyrid meteor shower (10/hour)	
• 16	17	18	19	20	21	22
Father's Day				Solstice, 10:04 PM PDT		
○ 23/30	24	25	26	27	28	• 29
			Oregon Wilderness Act passed, 1984	Taylor Grazing Act passed, 1934		



Read about an epic hike through the remote Owyhee Canyonlands.







# JULY



Narrow-leaf Paintbrush © David Cobb

*Wilderness is perhaps the greatest of democratic ideals. Wilderness doesn't care if you are the daughter of a peasant or the son of a king. It only cares that you visit it once in a while, treat it with respect, and come away understanding the largeness of the world and the smallness of yourself.*

Brent Fenty, Executive Director ONDA

SUNDAY

MONDAY

TUESDAY

WEDNESDAY

THURSDAY

FRIDAY

SATURDAY

1

2

3

4

5

6

Independence Day

Aphelion (Earth farthest from Sun) 8 PM PDT

7



8

9

10

11

12

13

Henry David Thoreau born, 1817

14



15

16

17

18

19

20

21



22

23

24

25

26

27

28



29

30

31

Delta Aquarid meteor shower (20/hour)

Capricornid meteor shower (15/hour)

Spotted owl listed as endangered species, 1990



Oregon Canyon: one of many scenic stops on the Oregon Desert Trail.







# AUGUST



Black-necked Stilt. © Chris Christie

*The raw landforms incessantly confront us  
with both geologic time and our own fragility.  
The rims were built over eons ... Shadows of  
clouds travel like phantoms across the white  
playas of the alkaline wet-weather lakes. But  
the endlessness of desert is not so intimidating  
if you focus on the beauties at your feet.*

William Kittredge, *Hole in the Sky*

President Theodore Roosevelt  
created Malheur National  
Wildlife Refuge, 1908

SUNDAY MONDAY TUESDAY WEDNESDAY THURSDAY FRIDAY SATURDAY

					1	2	3	
4	5	•	6	7	8	9	10	
11	12		13	☾	14	15	16	17
		Perseid meteor shower (60/hour)						
18	19	☉	20	21	22	23	24	
President Theodore Roosevelt created Malheur National Wildlife Refuge, 1908								
25	26		27	☾	28	29	30	31



Everyone loves a good story ...







# SEPTEMBER



Aspens, Steens Mountain. © Greg Burke

*A person moving through nature – however wild, remote, even desolate the place may be – is never truly alone. The surroundings are aware, sensate, personified. They feel. They can be offended. And they must, at every moment, be treated with the proper respect.*

David Abram, *The Spell of the Sensuous*

SUNDAY	MONDAY	TUESDAY	WEDNESDAY	THURSDAY	FRIDAY	SATURDAY
1	2 Labor Day	3 Federal Wilderness Act passed, 1964	4 Rosh Hashanah begins, sunset	5 ●	6 Rosh Hashanah ends President Franklin Roosevelt designated Hart Mountain as National Antelope Refuge, 1935	7
8	9	10	11	12 ☾	13	14 Yom Kippur
15	16	17	18	19 ○	20	21
22 Equinox, 1:44 PM PDT Interior Secretary Bruce Babbitt designated Klamath River a Wild & Scenic River, 1994	23	24	25	26 ☾	27	28
29	30					



Find out more about Steens Mountain.







# OCTOBER



Western Water Birch. © Jim Davis

*Swift or smooth, broad as the Hudson or narrow enough to scrape your gunwales, every river is a world of its own, unique in pattern and personality. Each mile on a river will take you further from home than a hundred miles on a road.*

Bob Marshall, The Wilderness Society

SUNDAY

MONDAY

TUESDAY

WEDNESDAY

THURSDAY

FRIDAY

SATURDAY

1

2

3

•

4

5

Federal Wild & Scenic  
Rivers Act passed, 1968

Congress passed Steens  
Mountain Cooperative  
Management & Protection  
Act, 2000

6

7

8

9

10

◐

11

12

Draconid meteor  
shower (10/hour)

13

14

15

16

17

○

18

19

Columbus Day

20

21

22

23

24

25

◐

26

Orionid meteor  
shower (20/hour)

John Day Fossil Beds  
National Monument  
founded, 1974

27

28

29

30

31

Congress passed Oregon  
Wild & Scenic Rivers Act,  
1988

Halloween



Whychus-Deschutes Canyon: explore the place where  
two rivers meet.







# NOVEMBER



Coyote. © Marylynne Diggs

*...the only real gold the desert offers – an occasional rainbow, hundreds of fantastic sunsets, ..., pungent aromas of desert shrubs, ..., and a thousand other delights. As with every generation, we are duty bound to protect all these for desert lovers yet born.*

Denzel and Nancy Ferguson, *Oregon's Great Basin Country*

SUNDAY

MONDAY

TUESDAY

WEDNESDAY

THURSDAY

FRIDAY

SATURDAY

1

2

● 3

4

5

6

7

8

● 9

Daylight Saving Time  
ends, 2 AM  
President Reagan signed  
Omnibus Oregon Wild &  
Scenics Act, 1988  
Oregon citizens vote  
to create state Scenic  
Waterways System, 1970

Election day

10

11

12

13

14

15

16

Veterans Day

○ 17

18

19

20

21

22

23

Leonid meteor shower  
(40/hour)

Cows removed from Owyhee  
Wild & Scenic River, 1999

24

● 25

26

27

28

29

30

Chanukah begins, sunset

Thanksgiving



Beauty? Solitude? Inspiration? What will you  
leave for future generations?







# DECEMBER



Petroglyphs, John Day River. © Cregg Large

*What did the tree learn from the earth  
to be able to talk to the sky?*

Pablo Neruda, *The Book of Questions*

SUNDAY	MONDAY	TUESDAY	WEDNESDAY	THURSDAY	FRIDAY	SATURDAY
1	2	3	4	5	6	7
8	9	10	11	12	13	14
15	16	17	18	19	20	21
22	23	24	25	26	27	28
29	30	31				



Oregon Badlands Wilderness reveals a landscape of ancient forests, lava flows and much more.



The Oregon Natural Desert Association works to protect the beauty and solitude of Oregon's wild desert places, including efforts in the Owyhee Canyonlands, Central Oregon Backcountry, Greater Hart-Sheldon Landscape, and the John Day River. You can contribute to ONDA's efforts and grow Oregon's conservation legacy by supporting ONDA today. Visit [www.onda.org/donate](http://www.onda.org/donate) to help protect the places you love.



Oregon Natural Desert Association  
50 SW Bond Street, Suite 4  
Bend, Oregon 97702  
541.330.2638 | [www.onda.org](http://www.onda.org)



JANUARY STEENS MOUNTAIN WILDERNESS



FEBRUARY SUTTON MOUNTAIN WSA



MARCH OWYHEE LESLIE GULCH WSA



APRIL RINCON WSA



MAY PUEBLO MOUNTAINS WSA



JUNE OWYHEE CANYONLANDS



JULY OREGON CANYON WSA



AUGUST TABLE MOUNTAIN WSA



SEPTEMBER STEENS MOUNTAIN WILDERNESS



OCTOBER DESCHUTES CANYON WSA



NOVEMBER COGLIAN BUTTES



DECEMBER BADLANDS WILDERNESS

## Wild Desert Calendar

The Wild Desert Calendar is a publication of the Oregon Natural Desert Association. Copyright to all photographs herein belongs to the photographers. Special thanks to Greg Burke, Jon Cain, Mark Chidlaw, Jim Davis, Daniela Marshall, Mike Sequeira, Deb Quinlan, Helen Harbin, Miriam Lipsitz, Darcy Hagin, West Coast Imaging and contributing photographers. ONDA also thanks our members, volunteers and supporters who have made this calendar and all of our work to conserve Oregon's deserts possible.

Printed with soy-based inks on 30% recycled, Forest Sustainability Council endorsed paper manufactured using 100% green, e-certified renewable energy.

Special thanks to the following contributors:



\$15.00