

Water Cache Guidelines, Maps & Driving Directions



Fall 2017

Water Cache Guidelines on the Oregon Desert Trail

Anyone planning to use the Oregon Desert Trail (ODT) is responsible for providing their own water. There is a databook/water chart available (<https://drive.google.com/open?id=13t9UgeMj9PFTdrSo-j9MiIRXe7b8-10DFq65eJb412o>) which rates water sources on a scale from reliable to questionable to unreliable, based on data gathered from recent seasons on the ODT. Even sources listed as reliable are subject to the whims of nature since water in the desert is never a guarantee. Instead, these ratings should be weighed with your own judgement of conditions in a given year or season.

Many wells and water facilities (cow tanks/troughs) on public land are maintained by private land owners; please respect all wells and facilities you may find along the trail.

Trail users may wish to cache water to make long stretches between reliable water sources more viable. Find a list of suggested water cache locations below with corresponding maps indicating where to place such caches. These locations have been suggested by previous ODT hikers who have taken into account ease of access with a vehicle, and distance between reliable water sources. **Caching on National Wildlife Refuges and National Forests is prohibited.**

When choosing the best method for caching supplies along the trail, please take the following items into consideration:

1. **Hide caches** so they are not visible from roads and mark with name and ETA date. (Sagebrush can offer good camouflage in many sections of the ODT) It is essential to HIDE your caches. Several have gone missing over the past few seasons because hikers did not hide their caches from view of roads.
2. Mark cache location with a GPS waypoint to ensure you can find them.
3. Avoid using flagging which can draw attention to your cache. If you deem flagging essential to recovering your cache (hiking without GPS device) please be sparing and pack out all traces to comply with [Leave No Trace](#) principals.
4. Bury caches only on previously disturbed land. High desert soils and vegetation can take many years to recover from disturbances.
5. Please be sensitive to any archaeological or cultural resources you encounter in the desert. Preserve the past: examine, but do not touch cultural or historic structures and artifacts.
6. When burying caches, place water/supplies in a 5 gallon bucket to prevent animal disturbances. Cover completely with dirt/rocks and GPS waypoint the location. If supplies have an odor, odor proof barrier bags (<http://loksak.com/civilian/opsak/>) should be used inside the 5 gallon bucket.
7. Plan to cache approximately 2 gallons [approx. 7.6 liters] per location, per person. Because individual water needs vary, please carry more water than you think you will need.
8. A "heavier" plastic water jug is recommended (see photo) as freezing water can crack a typical grocery store gallon jug, and extended sun exposure can make plastic brittle.
9. A high clearance 4-wheel drive vehicle is recommended to place caches. Please keep all vehicle travel to existing roads. In times of extreme fire danger, driving on primitive roads may be prohibited.



You must pack out all used containers and trash. Gallon jug containers are light and easily tied to a pack. Be even more prepared than you think you should be and have an incredible adventure.

Section 1 Map 2 of 8: Badlands to Sand Spring

121.07° W

121.06° W

121.05° W

121.04° W

121.03° W

121.02° W



Caching on National Wildlife Refuges & National Forests is prohibited.

1. **Hide caches** so they are not visible from roads and mark with name and ETA date. (Sagebrush can offer good camouflage in many sections of the ODT) It is essential to **HIDE** your caches. Several have gone missing over the past few seasons because hikers did not hide their caches from view of roads.
2. Mark cache location with a GPS waypoint to ensure you can find them.
3. Avoid using flagging which can draw attention to your cache. If you deem flagging essential to recovering your cache (hiking without GPS device) please be sparing and pack out all traces to comply with Leave No Trace principals.
4. Bury caches only on previously disturbed land. High desert soils and vegetation can take many years to recover from disturbances.
5. Please be sensitive to any archaeological or cultural resources you encounter in the desert. Preserve the past: look, but do not touch cultural or historic structures and artifacts.
6. When burying caches, place water/supplies in a 5 gallon bucket to prevent animal disturbances. Cover completely with dirt/rocks and GPS waypoint the location. If supplies have an odor, odor proof barrier bags (<http://loksak.com/civilian/opsak/>) should be used inside the 5 gallon bucket.
7. Plan to cache approximately 2 gallons [approx. 7.6 liters] per location, per person. Because individual water needs vary, please carry more water than you think you will need.
8. A "heavier" plastic water jug is recommended as freezing water can crack a typical grocery store gallon jug, and extended sun exposure can make plastic brittle.
9. A high clearance 4-wheel drive vehicle is recommended to place caches. Please keep all vehicle travel to existing roads. In times of extreme fire danger, driving on primitive roads may be prohibited.

You must pack out all used containers and trash.

Suggested Water Cache #1 CV009: Across road from Flatiron Rock Trailhead

ODT Trail Town
Bend 20 miles W

1:24000

0 0.25 0.5 0.75 1 Miles

Copyright © 2013 National Geographic Society, i-cubed

44° N
43.99° N
43.98° N
43.97° N
43.96° N
43.95° N

44° N
43.99° N
43.98° N
43.97° N
43.96° N
43.95° N

Section 1 Map 6 of 8: Badlands to Sand Spring

120.97° W 120.96° W 120.95° W 120.94° W 120.93° W

Caching on National Wildlife Refuges & National Forests is prohibited.

1. **Hide caches** so they are not visible from roads and mark with name and ETA date. (Sagebrush can offer good camouflage in many sections of the ODT) It is essential to **HIDE** your caches. Several have gone missing over the past few seasons because hikers did not hide their caches from view of roads.
2. Mark cache location with a GPS waypoint to ensure you can find them.
3. Avoid using flagging which can draw attention to your cache. If you deem flagging essential to recovering your cache (hiking without GPS device) please be sparing and pack out all traces to comply with Leave No Trace principals.
4. Bury caches only on previously disturbed land. High desert soils and vegetation can take many years to recover from disturbances.
5. Please be sensitive to any archaeological or cultural resources you encounter in the desert. Preserve the past: look, but do not touch cultural or historic structures and artifacts.
6. When burying caches, place water/supplies in a 5 gallon bucket to prevent animal disturbances. Cover completely with dirt/rocks and GPS waypoint the location. If supplies have an odor, odor proof barrier bags (<http://loksak.com/civilian/opsak/>) should be used inside the 5 gallon bucket.
7. Plan to cache approximately 2 gallons [approx. 7.6 liters] per location, per person. Because individual water needs vary, please carry more water than you think you will need.
8. A "heavier" plastic water jug is recommended as freezing water can crack a typical grocery store gallon jug, and extended sun exposure can make plastic brittle.
9. A high clearance 4-wheel drive vehicle is recommended to place caches. Please keep all vehicle travel to existing roads. In times of extreme fire danger, driving on primitive roads may be prohibited.

You must pack out all used containers and trash.



Suggested Water Cache #2 Pine Mountain Observatory -

Observatory Supervisor Alton Luken has offered to receive food or water caches from hikers at the top of Pine Mountain. Please call ahead or email to arrange a time to drop off your cache: 541-382-8331, aluken@uoregon.edu. Please include your ETA data and discuss with Alton where the cache will be located when you are hiking through.

D E S C H U T E S

1:24000

0 0.25 0.5 0.75 1 Miles

120.97° W 120.96° W 120.95° W 120.94° W 120.93° W

43.83° N

43.82° N

43.81° N

43.8° N

43.79° N

43.83° N

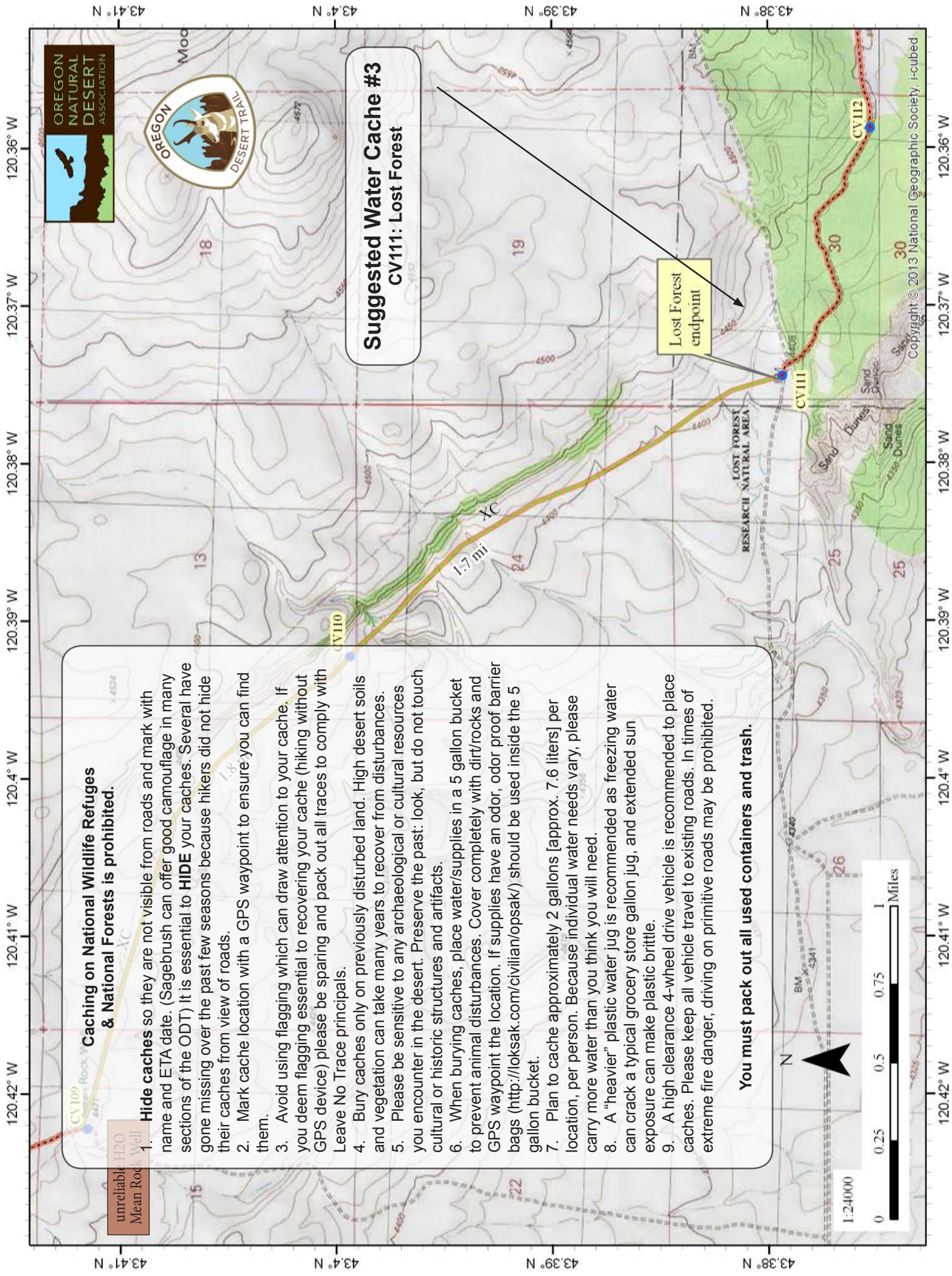
43.82° N

43.81° N

43.8° N

43.79° N

Section 3 Map 7 of 7: Squaw Flat to Lost Forest



Caching on National Wildlife Refuges & National Forests is prohibited.

unreliable H2O
Mean Rock Well

1. Hide caches so they are not visible from roads and mark with name and ETA date. (Sagebrush can offer good camouflage in many sections of the ODT) It is essential to **HIDE** your caches. Several have gone missing over the past few seasons because hikers did not hide their caches from view of roads.
2. Mark cache location with a GPS waypoint to ensure you can find them.
3. Avoid using flagging which can draw attention to your cache. If you deem flagging essential to recovering your cache (hiking without GPS device) please be sparing and pack out all traces to comply with Leave No Trace principals.
4. Bury caches only on previously disturbed land. High desert soils and vegetation can take many years to recover from disturbances.
5. Please be sensitive to any archaeological or cultural resources you encounter in the desert. Preserve the past: look, but do not touch cultural or historic structures and artifacts.
6. When burying caches, place water/supplies in a 5 gallon bucket to prevent animal disturbances. Cover completely with dirt/rocks and GPS waypoint the location. If supplies have an odor, odor proof barrier bags (<http://loksak.com/civilian/opsak/>) should be used inside the 5 gallon bucket.
7. Plan to cache approximately 2 gallons [approx. 7.6 liters] per location, per person. Because individual water needs vary, please carry more water than you think you will need.
8. A "heavier" plastic water jug is recommended as freezing water can crack a typical grocery store gallon jug, and extended sun exposure can make plastic brittle.
9. A high clearance 4-wheel drive vehicle is recommended to place caches. Please keep all vehicle travel to existing roads. In times of extreme fire danger, driving on primitive roads may be prohibited.

Suggested Water Cache #3
CV111: Lost Forest

Lost Forest endpoint

You must pack out all used containers and trash.



Section 4 Map 5 of 5: Lost Forest to Burma Rim

120.29° W 120.28° W 120.27° W 120.26° W 120.25° W 120.24° W

Caching on National Wildlife Refuges & National Forests is prohibited.

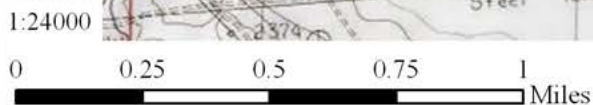
1. **Hide caches** so they are not visible from roads and mark with name and ETA date. (Sagebrush can offer good camouflage in many sections of the ODT) It is essential to **HIDE** your caches. Several have gone missing over the past few seasons because hikers did not hide their caches from view of roads.
2. Mark cache location with a GPS waypoint to ensure you can find them.
3. Avoid using flagging which can draw attention to your cache. If you deem flagging essential to recovering your cache (hiking without GPS device) please be sparing and pack out all traces to comply with Leave No Trace principals.
4. Bury caches only on previously disturbed land. High desert soils and vegetation can take many years to recover from disturbances.
5. Please be sensitive to any archaeological or cultural resources you encounter in the desert. Preserve the past: look, but do not touch cultural or historic structures and artifacts.
6. When burying caches, place water/supplies in a 5 gallon bucket to prevent animal disturbances. Cover completely with dirt/rocks and GPS waypoint the location. If supplies have an odor, odor proof barrier bags (<http://loksak.com/civilian/opsak/>) should be used inside the 5 gallon bucket.
7. Plan to cache approximately 2 gallons [approx. 7.6 liters] per location, per person. Because individual water needs vary, please carry more water than you think you will need.
8. A "heavier" plastic water jug is recommended as freezing water can crack a typical grocery store gallon jug, and extended sun exposure can make plastic brittle.
9. A high clearance 4-wheel drive vehicle is recommended to place caches. Please keep all vehicle travel to existing roads. In times of extreme fire danger, driving on primitive roads may be prohibited.

You must pack out all used containers and trash.

100 mile point

ODT Trail Town
Christmas Valley 19 miles W

Suggested Water Cache #4
CV133: Christmas Valley Wagontire Rd

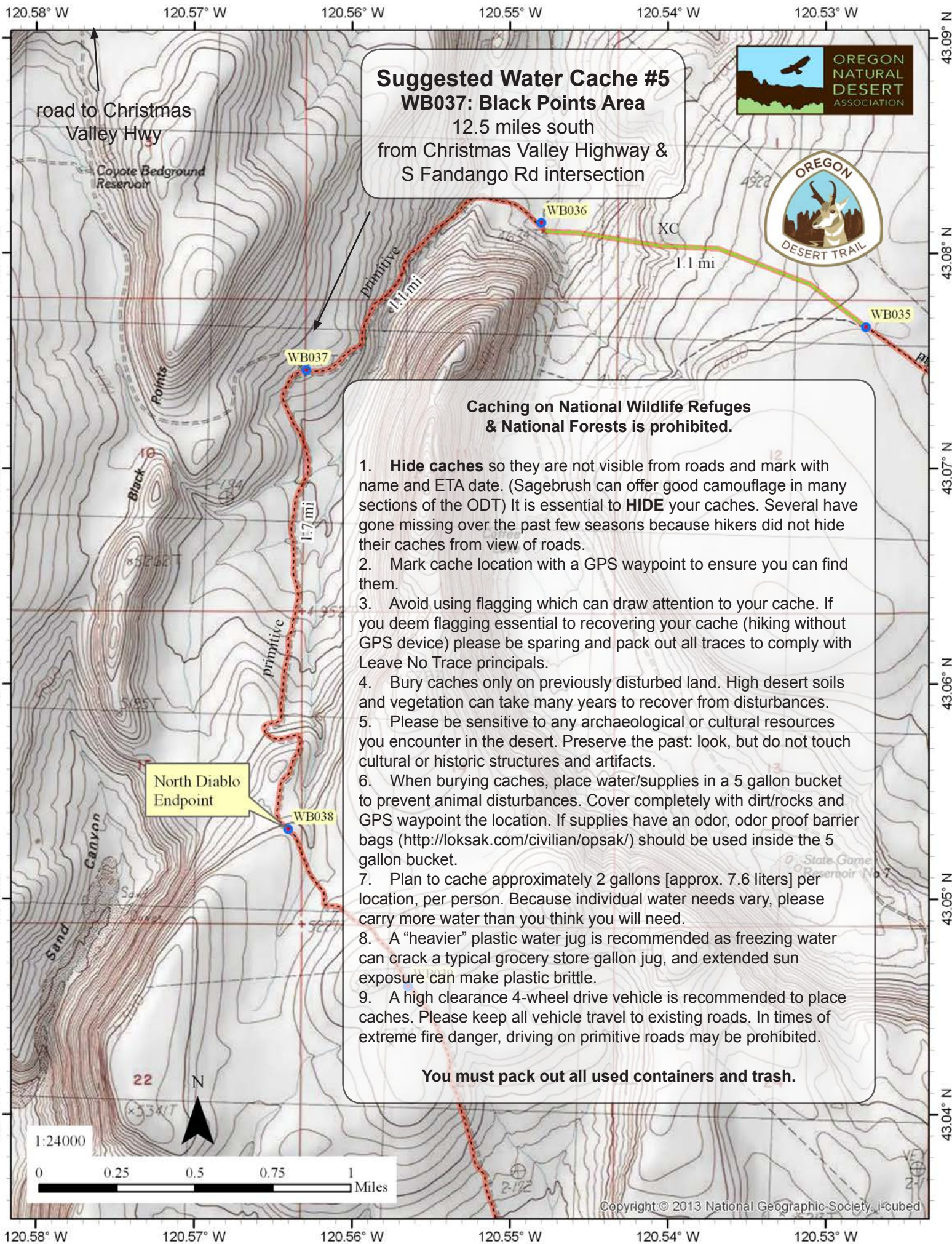


120.29° W 120.28° W 120.27° W 120.26° W 120.25° W 120.24° W

43.22° N
43.21° N
43.2° N
43.19° N
43.18° N

43.22° N
43.21° N
43.2° N
43.19° N
43.18° N

Section 5 Map 6 of 6: Burma Rim to Diablo Peak North



Suggested Water Cache #5
WB037: Black Points Area
 12.5 miles south
 from Christmas Valley Highway &
 S Fandango Rd intersection

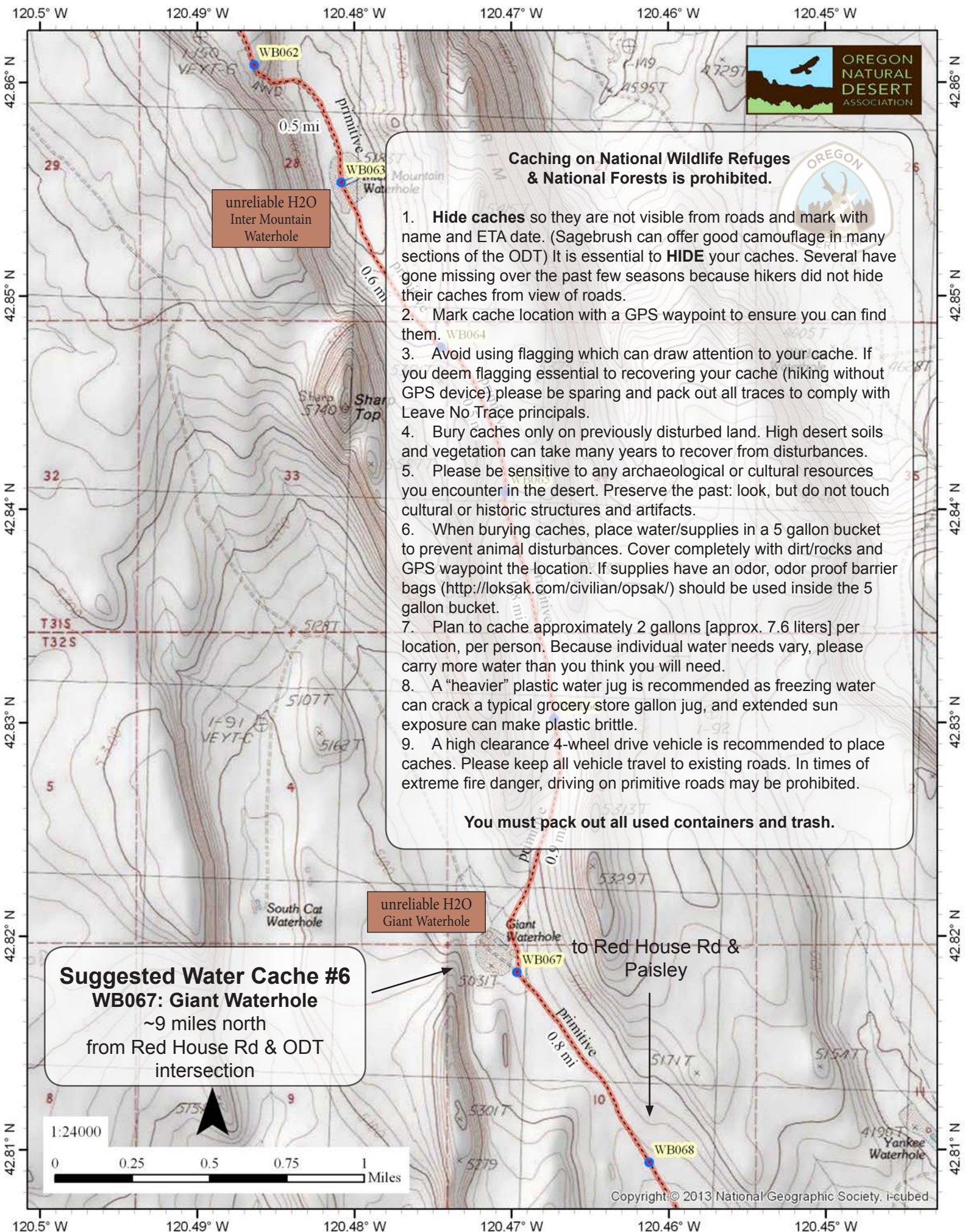


Caching on National Wildlife Refuges & National Forests is prohibited.

1. **Hide caches** so they are not visible from roads and mark with name and ETA date. (Sagebrush can offer good camouflage in many sections of the ODT) It is essential to **HIDE** your caches. Several have gone missing over the past few seasons because hikers did not hide their caches from view of roads.
2. Mark cache location with a GPS waypoint to ensure you can find them.
3. Avoid using flagging which can draw attention to your cache. If you deem flagging essential to recovering your cache (hiking without GPS device) please be sparing and pack out all traces to comply with Leave No Trace principals.
4. Bury caches only on previously disturbed land. High desert soils and vegetation can take many years to recover from disturbances.
5. Please be sensitive to any archaeological or cultural resources you encounter in the desert. Preserve the past: look, but do not touch cultural or historic structures and artifacts.
6. When burying caches, place water/supplies in a 5 gallon bucket to prevent animal disturbances. Cover completely with dirt/rocks and GPS waypoint the location. If supplies have an odor, odor proof barrier bags (<http://loksak.com/civilian/opsak/>) should be used inside the 5 gallon bucket.
7. Plan to cache approximately 2 gallons [approx. 7.6 liters] per location, per person. Because individual water needs vary, please carry more water than you think you will need.
8. A "heavier" plastic water jug is recommended as freezing water can crack a typical grocery store gallon jug, and extended sun exposure can make plastic brittle.
9. A high clearance 4-wheel drive vehicle is recommended to place caches. Please keep all vehicle travel to existing roads. In times of extreme fire danger, driving on primitive roads may be prohibited.

You must pack out all used containers and trash.

Section 6 Map 5 of 8: Diablo Peak North to Paisley



Caching on National Wildlife Refuges & National Forests is prohibited.

1. **Hide caches** so they are not visible from roads and mark with name and ETA date. (Sagebrush can offer good camouflage in many sections of the ODT) It is essential to **HIDE** your caches. Several have gone missing over the past few seasons because hikers did not hide their caches from view of roads.
2. Mark cache location with a GPS waypoint to ensure you can find them. WB064
3. Avoid using flagging which can draw attention to your cache. If you deem flagging essential to recovering your cache (hiking without GPS device) please be sparing and pack out all traces to comply with Leave No Trace principals.
4. Bury caches only on previously disturbed land. High desert soils and vegetation can take many years to recover from disturbances.
5. Please be sensitive to any archaeological or cultural resources you encounter in the desert. Preserve the past: look, but do not touch cultural or historic structures and artifacts.
6. When burying caches, place water/supplies in a 5 gallon bucket to prevent animal disturbances. Cover completely with dirt/rocks and GPS waypoint the location. If supplies have an odor, odor proof barrier bags (<http://loksak.com/civilian/opsak/>) should be used inside the 5 gallon bucket.
7. Plan to cache approximately 2 gallons [approx. 7.6 liters] per location, per person. Because individual water needs vary, please carry more water than you think you will need.
8. A "heavier" plastic water jug is recommended as freezing water can crack a typical grocery store gallon jug, and extended sun exposure can make plastic brittle.
9. A high clearance 4-wheel drive vehicle is recommended to place caches. Please keep all vehicle travel to existing roads. In times of extreme fire danger, driving on primitive roads may be prohibited.

You must pack out all used containers and trash.

Suggested Water Cache #6
WB067: Giant Waterhole
 ~9 miles north
 from Red House Rd & ODT
 intersection



Cache Driving Map

1 Off of Hwy 20

2 On Pine Mountain, gravel road from Hwy 20 to top, most cars will be fine driving on this well-traveled and maintained gravel road. Make sure to contact Mark at Observatory before driving up.

3 From Hwy 20 head south on well maintained gravel Fredrick's Butte Road, and then jog over on a series of dirt roads to the Lost Forest. When ground is wet, the travel could be difficult close to the Lost Forest. Most vehicles should be able to make it here.

4 Off of Wagontire road, a paved road. Any can can access.

5 A few miles south from Wagontire road the path become very rocky and very rough. Only a high clearance, 4-wheel drive vehicles are recommended to reach cache 5.

6 From just north of Paisley, head east on Red House Road, paved, until the road forks north. This maintained road is in good condition until you turn off on an increasingly rough road near Rocky Waterhole. Very rough going to reach Giant Waterhole.

