

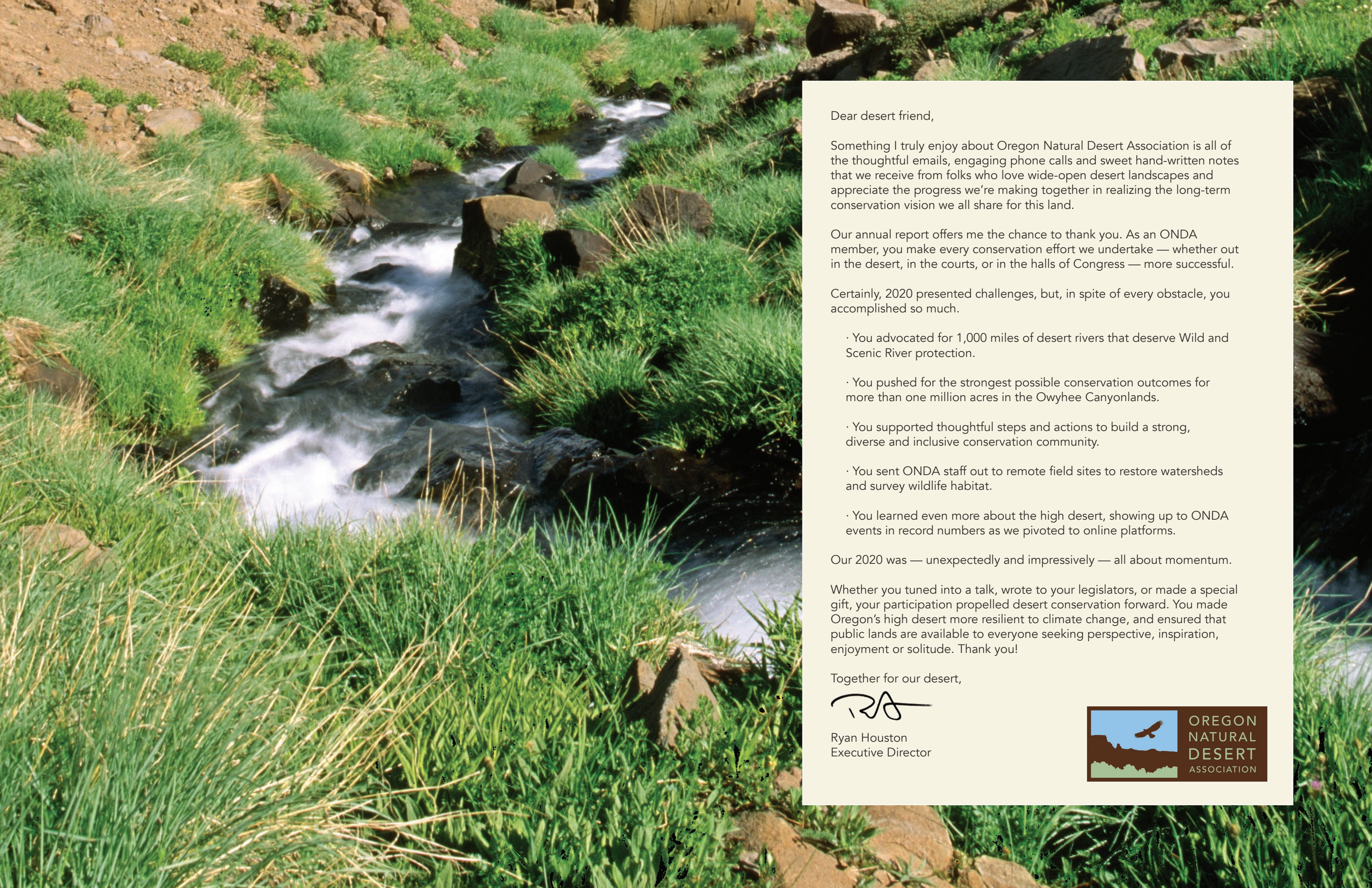
ANNUAL REPORT 2020

Your support fueled conservation successes across Oregon's high desert, preserving lands and waters for the benefit of wildlife, fish and people.

Wildhorse Creek on Steens Mountain. Photo: Alan St. John



OREGON
NATURAL
DESERT
ASSOCIATION



Dear desert friend,

Something I truly enjoy about Oregon Natural Desert Association is all of the thoughtful emails, engaging phone calls and sweet hand-written notes that we receive from folks who love wide-open desert landscapes and appreciate the progress we're making together in realizing the long-term conservation vision we all share for this land.

Our annual report offers me the chance to thank you. As an ONDA member, you make every conservation effort we undertake — whether out in the desert, in the courts, or in the halls of Congress — more successful.

Certainly, 2020 presented challenges, but, in spite of every obstacle, you accomplished so much.

- You advocated for 1,000 miles of desert rivers that deserve Wild and Scenic River protection.
- You pushed for the strongest possible conservation outcomes for more than one million acres in the Owyhee Canyonlands.
- You supported thoughtful steps and actions to build a strong, diverse and inclusive conservation community.
- You sent ONDA staff out to remote field sites to restore watersheds and survey wildlife habitat.
- You learned even more about the high desert, showing up to ONDA events in record numbers as we pivoted to online platforms.

Our 2020 was — unexpectedly and impressively — all about momentum.

Whether you tuned into a talk, wrote to your legislators, or made a special gift, your participation propelled desert conservation forward. You made Oregon's high desert more resilient to climate change, and ensured that public lands are available to everyone seeking perspective, inspiration, enjoyment or solitude. Thank you!

Together for our desert,

Ryan Houston
Executive Director



2020 REVIEW

YOUR KEY ACCOMPLISHMENTS



Rallying Desert River Enthusiasts

Oregonians love rivers, and Senator Wyden wants Oregon to become the national leader in designated Wild and Scenic Rivers. Riding a “wave” of nominations from the ONDA community, ONDA dedicated ourselves to documenting hundreds of miles of desert rivers, streams, creeks and lakes worthy of federal protection in support of the most ambitious Wild and Scenic Rivers proposal ever undertaken.

Creating resilient desert watersheds

COVID-19 put the kibosh on hosting groups of volunteers for habitat restoration projects, but, it didn't stop our critical restoration work. When it was safe to do so, our team headed into the desert, solo, to plant over 6,000 trees and installed 12 beaver dam analogues to enhance watershed health in the John Day River Basin.



Keeping an eye on the steppe

ONDA participated in twenty-five planning and management decision processes affecting millions of acres of Oregon's high desert, and updated public lands data for more than 675,000 acres for wilderness values, supporting our efforts to protect critical wildlands.



Preserving a wild Steens Mountain

We celebrated the twentieth year following passage of the Steens Mountain Cooperative Management and Protection Act with #SteensWeek and continued to advocate for the mountain's wild side, closely monitoring travel management planning, contesting inappropriate livestock grazing and advocating for special protection for Steens' wild and scenic creeks and streams.



Engaging a Broad Desert Community

ONDA's community grew significantly in 2020. We hosted educational events online that reached thousands of people, welcomed 800 new members, and applied an equity and inclusion lens when planning our events and actions to ensure our organization and programming inspires people from all communities get involved in conservation. In all, ONDA members and supporters reached out to their elected leaders and land management agency heads over 12,000 times to call for conservation.

Channelling momentum for Owyhee protection

ONDA led the Owyhee Coalition, which collectively represents over one million public lands supporters. We generated a surge of support for conserving Oregon's Owyhee Canyonlands, making it possible for thousands of people (like you!) to take part in direct advocacy to protect the Owyhee. We encouraged people from all walks of life — including the influential voices of elected officials, tribal leaders, small and large business owners, ranchers, hunters, anglers, outdoor guides, healthcare providers, teachers and more — to publicly express their support for Owyhee conservation.



Defending wildlife and their habitat

ONDA challenged efforts to undermine sage-grouse protections on public lands, secured long-term protections for bull trout in the Malheur River watershed and promoted new initiatives to conserve habitat connectivity throughout eastern Oregon.



Photos: clockwise from top right: Dave Rein, Jon Muyskens, Alan St. John, Corinne Handelman, Tom Koerner, John Waller, Sage Brown

To learn about meaningful ways to support conservation, visit [ONDA.org/give](https://onda.org/give).



YOUR SUPPORT KEEPS ONDA STRONG



As the only conservation organization dedicated exclusively to watching over Oregon’s high desert lands

and waters, Oregon Natural Desert Association is often called on to be in many places at once. In the past, your support has allowed ONDA to be unwavering stewards addressing the top conservation priorities across the desert. In 2020, your steadfast support allowed ONDA to be nimble, strong and successful in a decidedly tumultuous year.

Your generosity has led to successful conservation across the high desert, and your trust in ONDA is greatly appreciated.

Photo: Dan Steiffert

2020 FINANCIALS

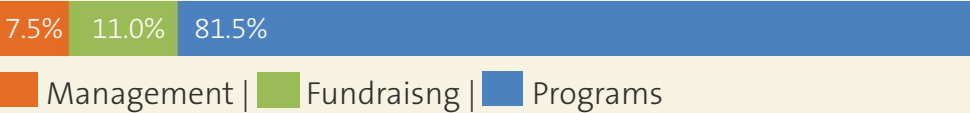
Assets	
Total Current Assets	\$3,726,807
Total Fixed Assets	\$6,586
Other Assets	\$6,920
Total Assets	\$3,740,313

Liabilities	
Total Liabilities	\$241,111
Total Equity	\$3,499,202
Total Liabilities & Equity	\$3,740,313

Revenue	
Total Support & Revenue	\$1,689,468
Non-operating Income	\$250,470
Total Revenue	\$1,939,938

Expense by Category	
Management	\$126,438
Fundraising	\$185,625
Programs	\$1,354,209
Total Expenses	\$1,666,272

How Your Support is Applied (Expense by Category)
Your investment makes ONDA efficient and effective.



For additional insights,
please visit [ONDA.org/financials](https://onda.org/financials).

Steens Mountain creek. Photo: Alan St. John