

# Priority Sage-Grouse Habitat in the Greater Hart-Sheldon

Located on the Oregon-Nevada border, the Greater Hart-Sheldon is one of the six most important habitats remaining for greater sage-grouse in the American West.

Sage-grouse are both a charismatic ambassador and umbrella species for the Sagebrush Sea, representing more than 350 species of conservation concern in the ecosystem.

Current planning processes on public lands in Oregon and across the West might finally deliver protections necessary to conserve and recover sage-grouse rangewide.



Photo by Shannon Phifer

Greater Sage-grouse  
(*Centrocercus urophasianus*)

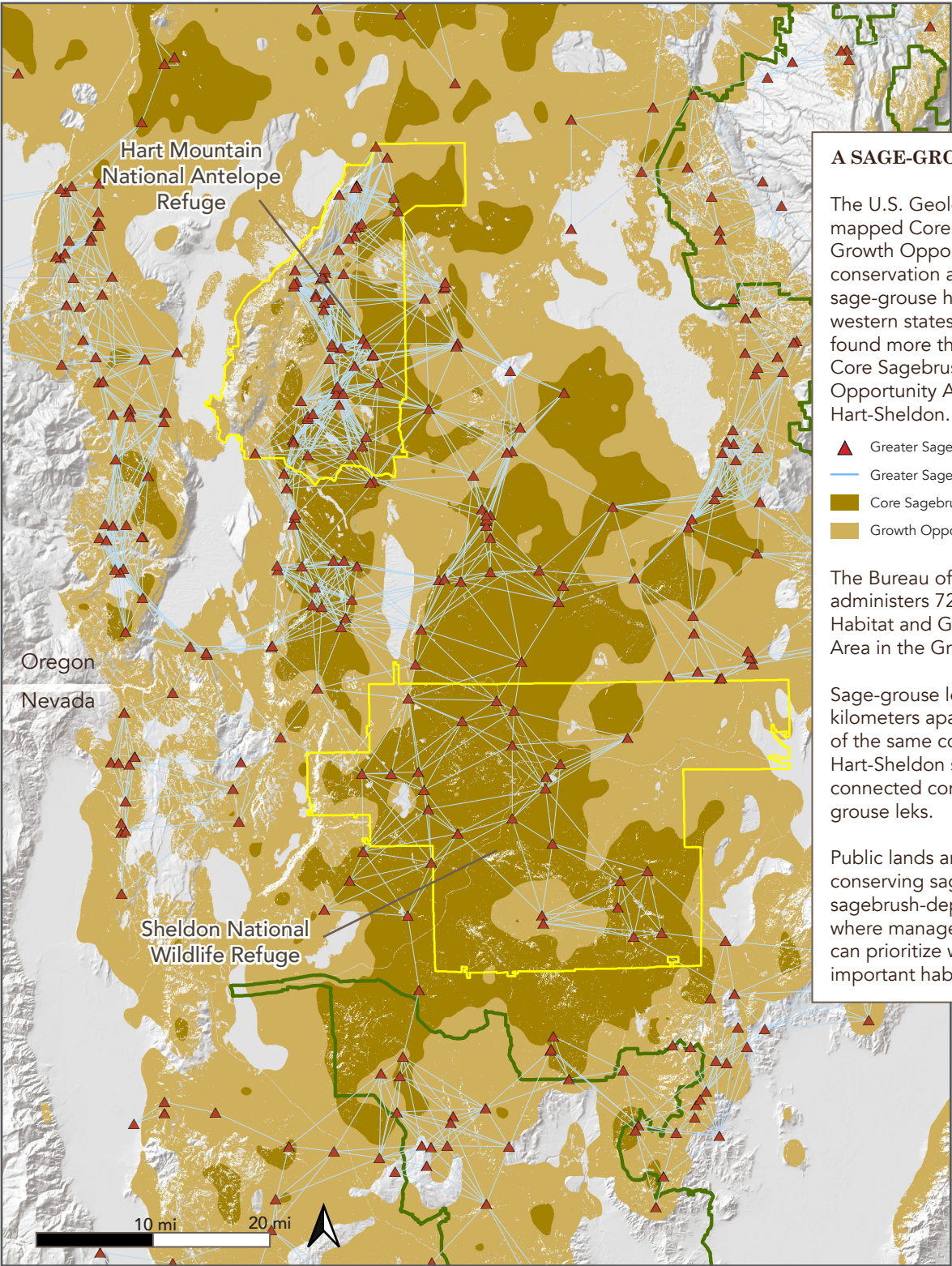


Photo by USFWS

In Oregon, the sage-grouse population has declined 40 percent since 2003.

## WHAT IT WILL TAKE TO SAVE THIS SPECIES?

Despite marginal increases in recent years, the sage-grouse population in Oregon continues to hover around its historic low.

More importantly, the sage-grouse population in the Greater Hart-Sheldon declined by 22 percent in 2022.

Recovering sage-grouse populations requires first protecting Core Sagebrush Areas, and then implementing strategies to restore and secure habitat in Growth Opportunity Areas.