

WORKING TO

# PROTECT, DEFEND AND RESTORE OREGON'S HIGH DESERT

**ANNUAL REPORT 2022**



OREGON  
NATURAL  
DESERT  
ASSOCIATION



Dear Desert Supporter,

Oregon's high desert is an exceptional landscape, and the ONDA community who love it and care for it are extraordinary.

As a warming climate and other pressures bear down on the rivers, canyons, meadows and sagebrush plains that support the iconic pronghorn, charismatic sage-grouse or diminutive pygmy rabbit, all of you – ONDA's members – grow ever more dedicated to conserving Oregon's most incredible landscapes.

Together we campaigned to protect more than a million acres in the iconic Owyhee Canyonlands, to connect the migratory corridors in the Greater Hart-Sheldon and to preserve the picturesque beauty of the John Day region's Sutton Mountain. This has been coupled with unwavering, steadfast attention to some of the most important land management decisions in a generation. Thanks to you, we're successfully advocating for long-term conservation management in the plans that govern management of millions of acres of public lands.

We've also secured important gains in the lesser-known corners of the high desert, such as Lake Abert, where ONDA worked to secure federal funding for science and research that will fuel conservation for years to come. When combined with new investments and commitments we've secured from the state of Oregon, the future for Lake Abert and the thousands of migratory birds that depend on it is brighter than it has been for decades.

Our restoration and stewardship work made essential, and substantial, progress in our aim to provide for the ecological health of our beloved desert wildlands. Your commitment propelled 30 volunteer stewardship trips with hundreds of volunteers, planting more than 8,300 trees and restoring hundreds of acres to improve habitat for high desert wildlife.

Please join me in reflecting with pride on your accomplishments in 2022 while looking ahead with optimism for what lies ahead in 2023. Thank you for your continued support, dedication and generosity as we join together to conserve Oregon's high desert.

  
Ryan Houston  
Executive Director



COVER PHOTO: DEVLIN HOLLOWAY. PHOTOS AT RIGHT, CLOCKWISE: DALE NIBBE; ONDA STAFF; PATRICK FRENCH, JIM DAVIS.

# THANK YOU!

Your generosity powers successful conservation initiatives desert-wide and makes it possible to reach new milestones and realize long-term conservation goals.

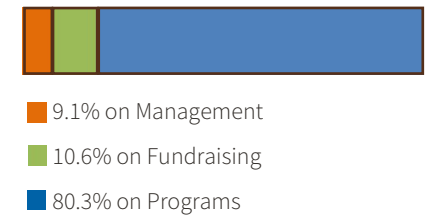
Thank you for the role you play in this desert conservation community!

## 2022 FINANCIALS

Assets	
Total Current Assets	\$4,702,833
Total Fixed Assets	\$3,813
Other Assets	\$6,920
<b>Total Assets</b>	<b>\$4,713,566</b>
Liabilities	
Total Liabilities	\$667,207
Total Equity	\$4,046,359
<b>Total Liabilities &amp; Equity</b>	<b>\$4,713,566</b>
Revenue	
Total Support & Revenue	\$1,605,462
Expense by Category	
Management	\$166,229
Fundraising	\$192,632
Programs	\$1,459,546
<b>Total Expenses</b>	<b>\$1,818,407</b>

## HOW YOUR SUPPORT IS APPLIED

Thanks to you, ONDA is efficient and effective.



# KEY ACCOMPLISHMENTS ACROSS OREGON'S DESERT

To see more highlights from 2022, as well as years past, please visit [onda.org/about-us/accomplishments/](https://onda.org/about-us/accomplishments/)



## Priming More Than a Million Acres and Hundreds of River Miles for Protection

Your abiding advocacy kept three strong land and water protection campaigns ready for Congressional action.

- » 1.13 million acres in the Owyhee Canyonlands proposed for designation as Wilderness
- » 66,000 acres in the John Day River Basin positioned to be Oregon's next national monument
- » Up to 800 miles of desert waters on deck for protection as Wild & Scenic Rivers



## Restoring Desert Habitat

ONDA led 30 stewardship trips and 20 independent projects. Volunteers planted a grand total of 8,300 trees and shrubs to improve habitat resiliency in the Crooked River, John Day River and Malheur River watersheds, constructed one full mile of exclosure fence to protect sensitive habitat on the South Fork Crooked River, and retrofitted four miles of fence to wildlife-friendly standards, to reconnect the pronghorn migration routes in the Greater Hart-Sheldon.



## Ensuring Your Concerns Are Heard


To keep the wild character of Steens Mountain intact, ONDA made a formal request to the Secretary of the Interior to preserve the quiet, solitude and premier wilderness habitat on more than one million acres. We submitted a comprehensive report to the Bureau of Land Management to encourage them to limit road expansion and weighed in on a major federal planning process to outline the essential steps that must be taken to save species that depend on healthy sagebrush ecosystems.



## Speaking Up for a Vanishing Saline Lake

ONDA catalyzed new opportunities for improved water management in the Chewaucan River to address the long-standing problems at Lake Abert, which provides essential habitat for hundreds of thousands of migratory birds as they travel the Pacific Flyway, a major north-south migration route extending from Alaska to Patagonia.





## An Exceptional Community

Here's how you showed up for Oregon's desert in 2022:

**75 new monthly donors**, bringing us up to a total of 700 monthly donors

**258 volunteers** who contributed more than 9,000 hours of incredible volunteer service

**578 new members**, joining our community of more than 5,900 ONDA members

**2,300+ people attending ONDA-hosted events** to learn about desert topics

**2,500+ people taking part in desert advocacy**, sending more than 4,000 messages to decision-makers to spur them to action

Thank you for your passion for desert conservation and for keeping this momentum going strong in 2023.

*Greater sage-grouse mating grounds at sunrise.  
Photo: Jennifer Strickland*

## MISSION

Oregon Natural Desert Association exists to protect, defend and restore Oregon's high desert for current and future generations.

## VISION

We envision a high desert in Oregon where eight million acres of public lands are conserved to ensure that fish and wildlife thrive and wild places exist for all people to treasure and explore, now and always.

## VALUES

- » We are committed, tenacious, passionate, nimble and unwavering in pursuit of our mission.
- » We are science-based and solutions-oriented, bringing innovative, strategic approaches to achieving our conservation goals.
- » We are inclusive and welcoming, and seek to build a strong, diverse and interconnected conservation community throughout our staff, membership, volunteers, board of directors and partnerships.
- » When working with stakeholders, agencies, partner organizations, the public and others, we respectfully consider all perspectives while pursuing our conservation goals.



Learn more at [ONDA.org](https://onda.org).