




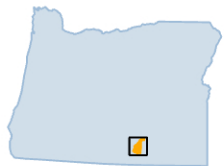


WARNER PEAK FIRE TEMPORARY CLOSURE AREAS (until June 15, 2025)

*Hart Mountain
National Antelope Refuge*

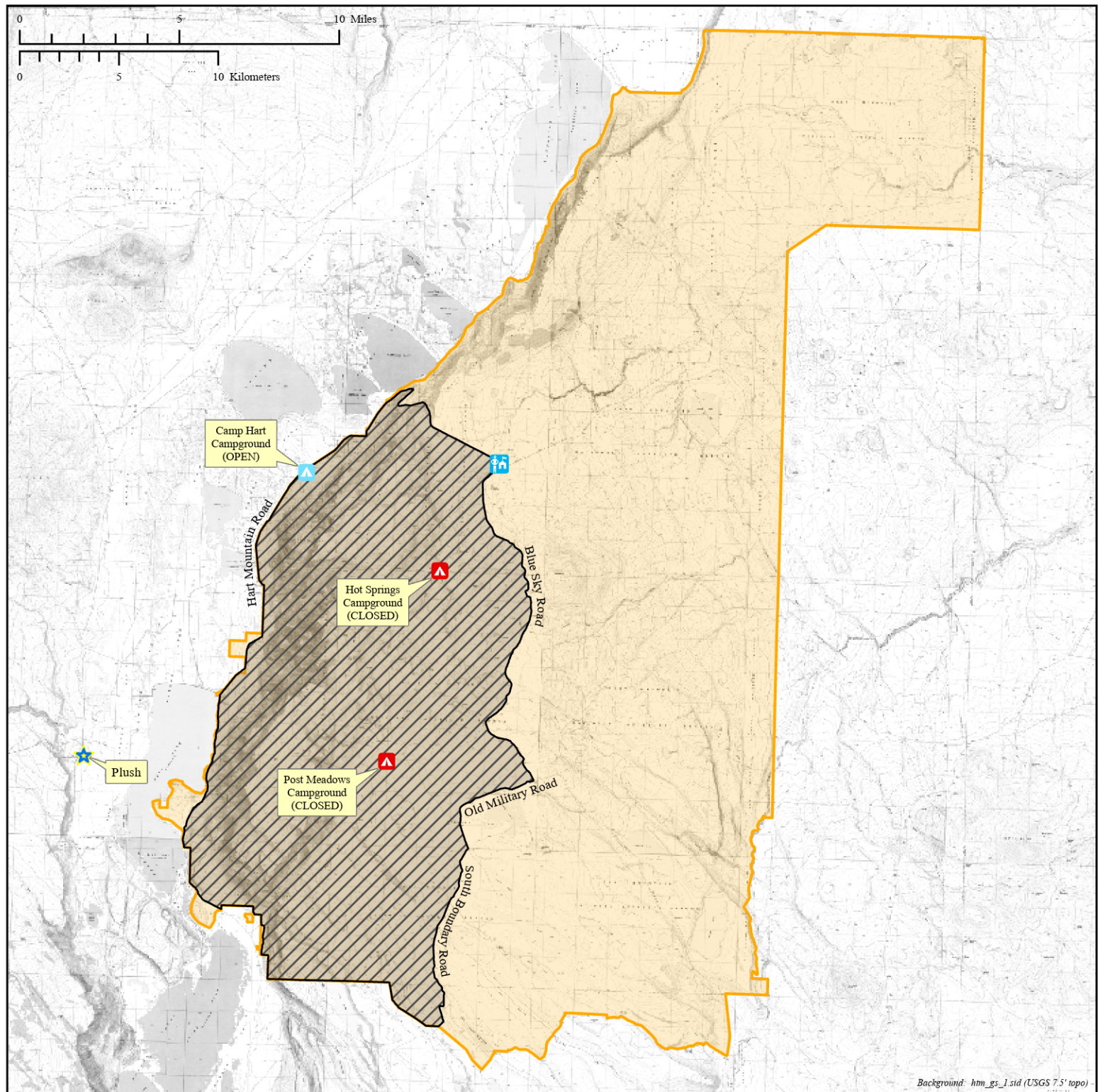
-  Temporary Closure Area
-  Refuge Boundary
-  Refuge HQ
-  Campground (Open)
-  Campground (Temporarily Closed)

U.S. DEPARTMENT OF THE INTERIOR
U.S. Fish & Wildlife Service
Sheldon-Hart Mountain NWR Complex
Hart Mountain National Antelope Refuge
Lake County, Oregon



NOTE: No warranty is made by the U.S. Fish & Wildlife Service as to the accuracy, reliability, or completeness of these data for individual or aggregate use with other data. Original data was compiled from various sources and may be updated without notification.

Layout Name: TemporaryClosureAreas_2024-2025
File Name: WarnerPeakFire_2024_TemporaryClosureAreas.aprx
Map Date: 28-August-2024



Background: hnm_gs_1.std (USGS 7.5' topo)